

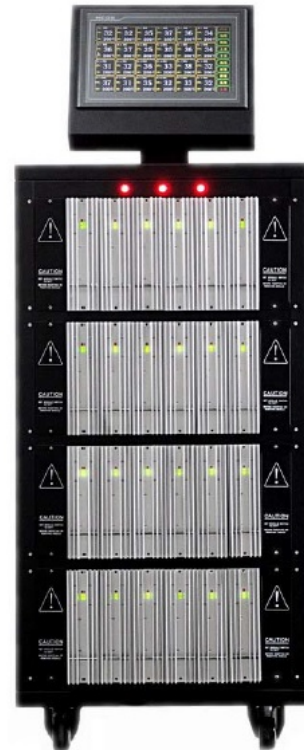
# TMFT - T SERIES

## Hot Runner Temperature Controller



### Features

- ◆ 2 to 120 zones of control
- ◆ Large, intuitive, full color touch screen, simple operation
- ◆ Interchangeable card design, reduces maintenance costs
- ◆ Two zones per card at 16amps per zone
- ◆ Real-time amperage measurement
- ◆ Integrated design with external heat sink, reduces downtime
- ◆ Patented “all-in-one” control card designed for reliability
- ◆ Automated mold diagnostics to ensure hardware performance
- ◆ Selectable phase angel or zero cross power control method
- ◆ Low voltage soft start to maximize heater life
- ◆ Multiple startup sequence options available for process optimization
- ◆ Quality construction cabinet card rack and connectors
- ◆ Mold and controller protection design features reduce downtime
- ◆ Minimum cabinet wiring reduces risk of faults
- ◆ Multi-mold set-up storage
- ◆ USB support for importing and exporting data
- ◆ Password enabled security



### Specifications

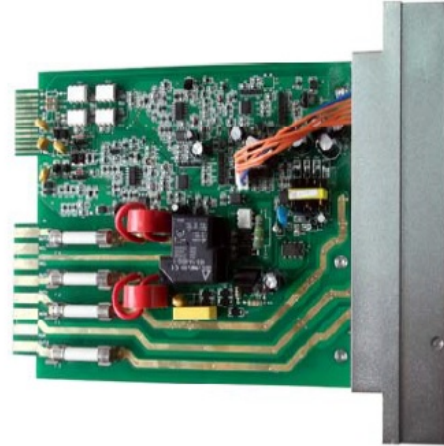
User Interface	Full color LCD touch screen	Display Size	7.0" or 10.2" inches
Power Supply	1-Ph+E(3 wire)200-240Vac	Frequency	50-60Hz automatic switching
	3-Ph+E(4 wire)200-240Vac	Control Mode	Auto-PID / Manual
	3-Ph+N+E(5 wire)380-415Vac	Power Control	Zero Cross / Phase Angle
Thermocouple	J or K-Type, software selectable	Degree Unit	°F or °C, software selectable
Calibration Accuracy	±0.25% FS	Measurement Range	0~500°C (0~900°F)
Control Stability	±1digit-under steady state	Setting Range	0~450°C (0~842°F)
Overload Protection	Fuses on both heater legs	Load Capacity	Rated 240Vac, 16Amps per zone
Working Temperature	0~50°C (0~122°F)	Soft-Start	Using low voltage for heater safety
Storage Temperature	-20~70°C (-4~158°F)	TC Connector	Varies options available
Working Humidity	10~80%RH (No condensing)	Mold Power Connector	Varies options available



# Hot Runner Temperature Controller

## Control Cards

- ◆ Integrated design with external heat sink
- ◆ Mechanical relay on non-switched leg
- ◆ 2 zones per card at 16amps each
- ◆ Run with grounded or ungrounded thermocouples
- ◆ Thermocouple slaving (auto and manual)
- ◆ Phase angle or zero cross power output control
- ◆ Cards interchangeability
- ◆ Automated mold diagnostics
- ◆ Real-time amperage measurement
- ◆ Patented “all-in-one” control card designed for reliability
- ◆ Low voltage soft start to maximize heater life



control card come standard with two zones per card at 16amps per zone and are fully interchangeable across all mainframe designs, The externally mounted heat sink and integrated design reduce maintenance cost and downtime.

## Main Interface



Simple to operate with intuitive navigation

## Cabinet Type



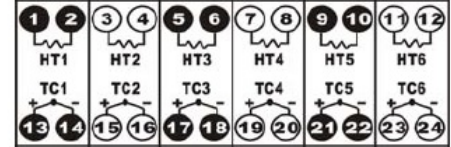
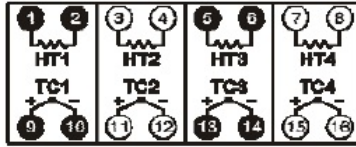
# Hot Runner Temperature Controller Accessories



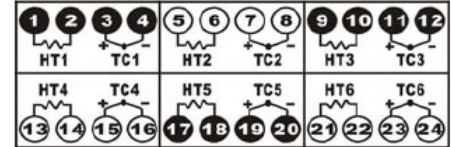
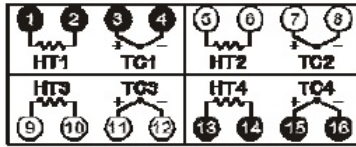
## Mold Power-Thermocouple Combination Cable



Wiring mode 1:

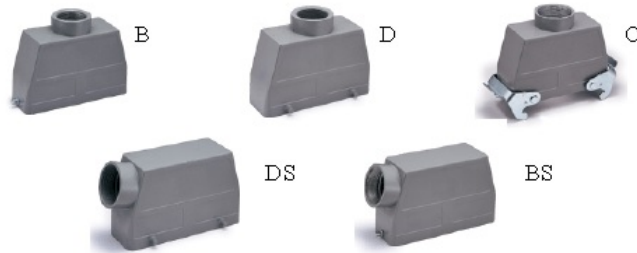


Wiring mode 2:



### Connector protective hood type:

- B: Top cable entry with single button
- D: Top cable entry with dual button
- C: Top cable entry with dual hook
- DS: Side cable entry with dual button
- BS: Side cable entry with single button



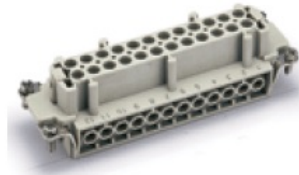
## Heavy Duty Connector

- ◆ Rated current: 16A
- ◆ Rated voltage: 400/500V
- ◆ Flammability acc. to UL94: V0
- ◆ Degree of protection: IP65
- ◆ Terminal: Screw terminal
- ◆ Poles: 6, 10, 16, 24
- ◆ Selectable protective housings and hoods

Male (Plug)



Female (Socket)



## Others

Blank plate



Control module socket  
with gold-plated terminals



Control module guide slot

139.7mm, NYLON66

